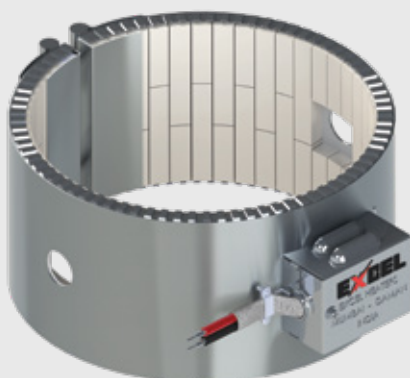


Cylinder Heating Application; Operating Temperatures up to 800°C

Applications: Injection Moulding Machine, Extruder Machine, Blow Moulding Machines, Rubber industry, cylindrical heating applications

Technical Specifications

- ▶ Max Operating Temperature 800°C
- ▶ Heater Inner Diameter 2 1/2" or 65mm and up
- ▶ Width 1 1/2" or 38mm and up
- ▶ Thickness 12mm
- ▶ Rated Voltage Upto 480 V (single or three phase)
- ▶ Watt Density Upto 50 W/in²
- ▶ Resistance Tolerance NEMA Standard plus 10% Minus 5%
- ▶ Wattage Tolerance NEMA Standard plus 5% Minus 10%
- ▶ Terminals Junction Box fitted with braided cable & Post terminals & many more options
- ▶ Sheath Material ALSTAR Aluminium coated Steel (rust protection, high heat retention, faster heating)
- ▶ Clamping Arrangement M6 & M8 fastner

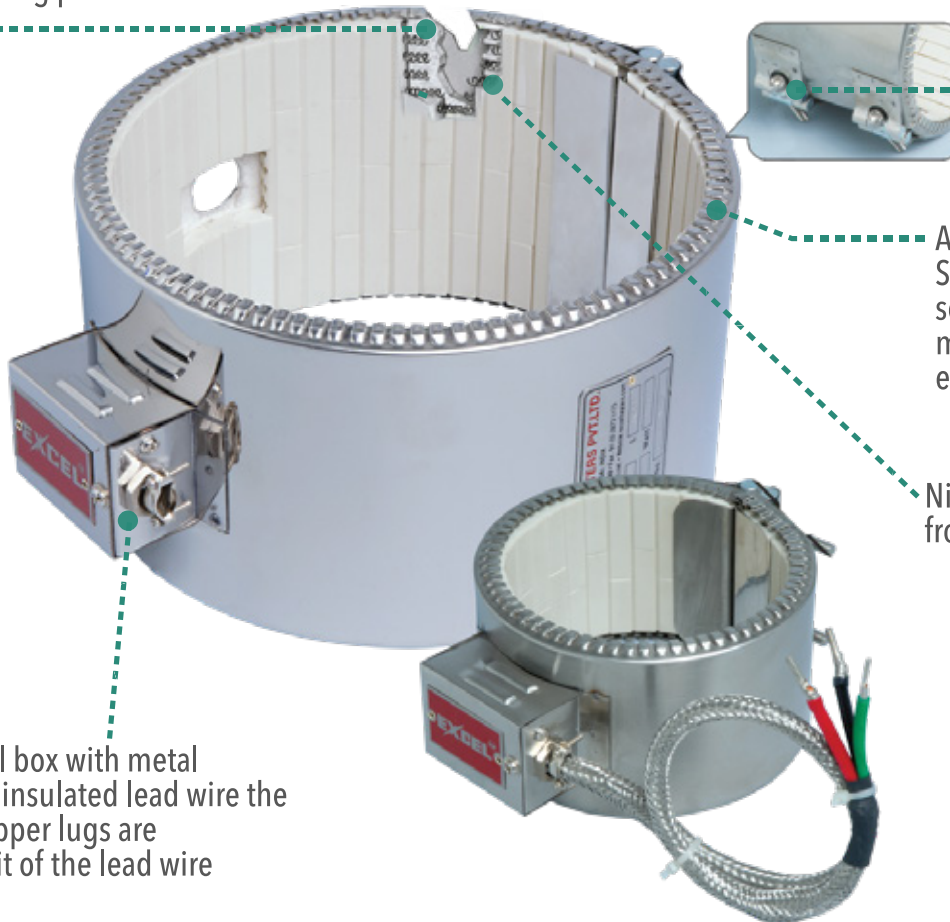


Features



Ceramic fiber insulation to reduce heat loss through radiation on the outside, thus reducing power consumption

Spot welded "Clamp bars" provide uniform clamping force



ALSTAR Aluminium coated Steel from Japan with serated edges provide maximum flexibility for ease of installation

Nichrome heating element from Germany & Sweden

Protective terminal box with metal braided fiberglass insulated lead wire the high electrolyty copper lugs are crimped on the exit of the lead wire

